





PLASTIC BOOK BOX FOR ELEVATE DESKS

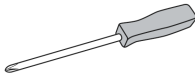
 NOTE: Before you begin, please make sure all parts and proper quantities are included. Any parts damaged during shipment must be reported within 24 hours of receipt. To report information regarding damages or if you have any questions, please call 800.242.2303.

 NOTE: These instructions are based on model PNH7366-ADJ. These instructions work for all Elevate Desk models. Product images are for illustrative purposes only and may differ from actual product.

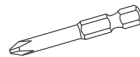
TOOLS NEEDED



Drill



Phillips Screwdriver



Phillips Drill Bit



Assistance

PARTS



HARDWARE x QTY



#14 7/8" long w/ hex drive head screw x 16
0401036



Washer, 3/4" OD, 1/4" ID, 0.04" thick, black x 6
04068742

PARTS x QTY

#	DESCRIPTION x QTY
1	Assembled Elevate Desk x 1
2	Plastic Book Box x 1



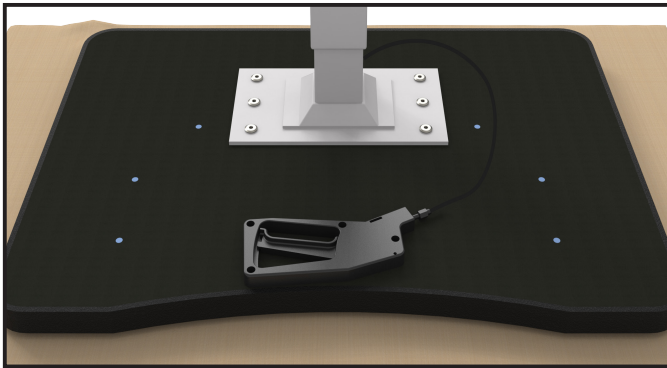
The assembly of this desk requires the assistance of another person.



NOTE: Hardware packs are included in packaging. You may receive more hardware than needed. Discard any extra hardware after assembly.

ASSEMBLY

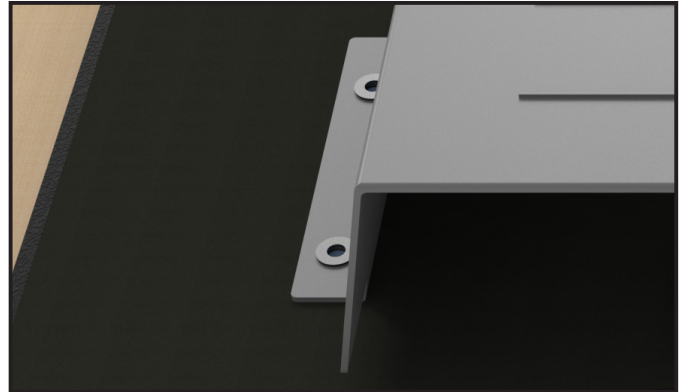
1. With the help of another person, place the top ① face down on a protected flat surface so threaded inserts are facing up. Legs are to be pre-assembled to the top before assembling the book box. Pre-drilled pilot holes are shown in blue for illustrative purposes only.



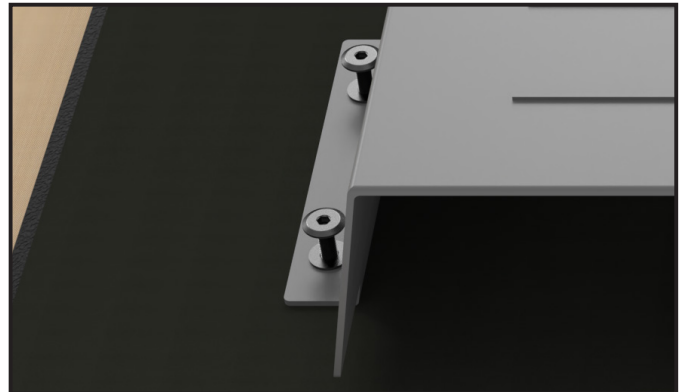
2. Align the holes in the plastic book box tabs over the pre-drilled pilot holes.



3. Align washers with the holes in the plastic book box tabs.



4. Use #14 7/8" long w/ hex drive head screws to fasten each of the tabs of the plastic book box to the top.



5. With the help of another person, turn desk over to the upright position.

